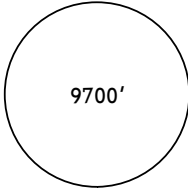
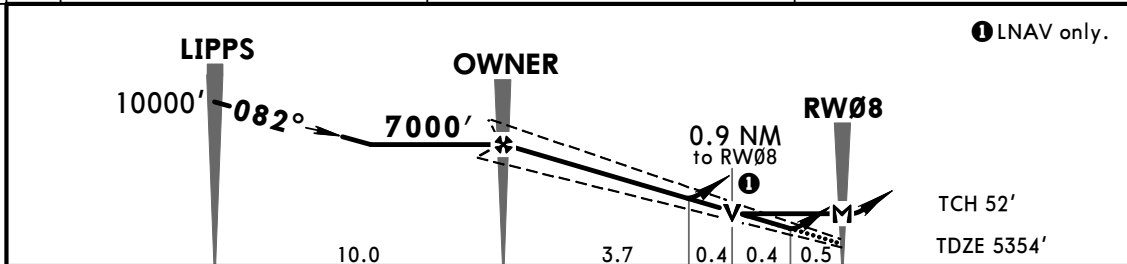
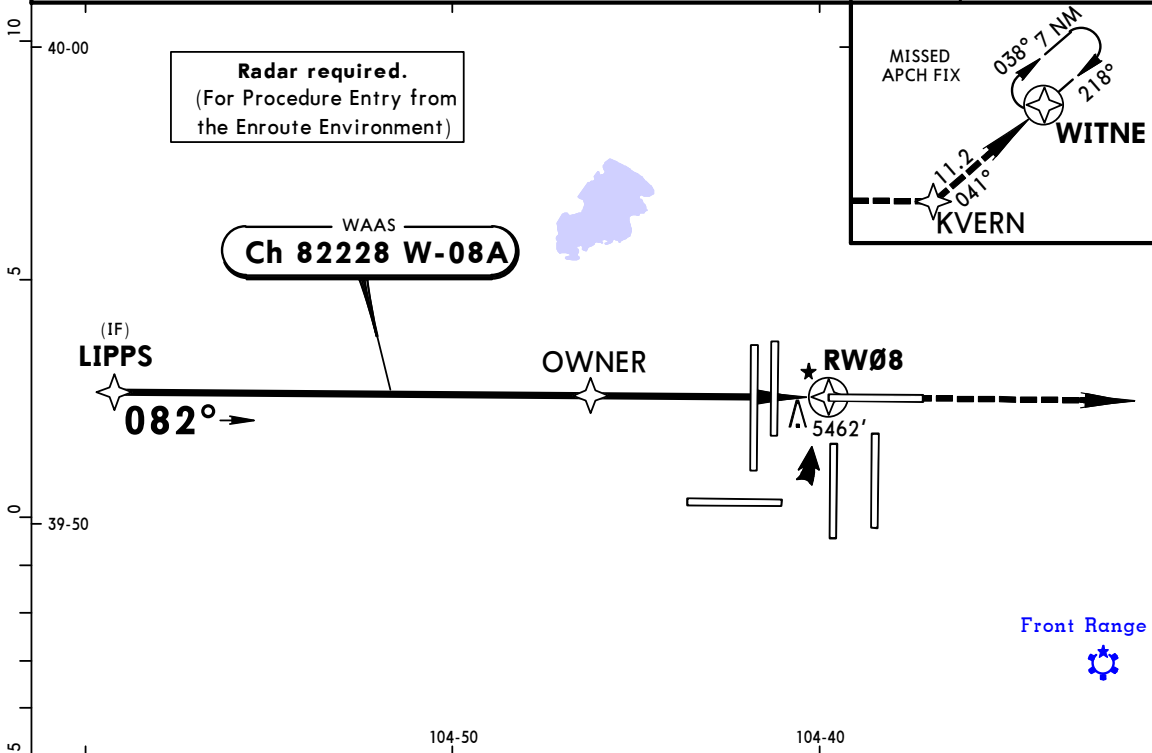


KDEN/DEN
DENVER INTL

JEPPESEN
29 JAN 16
Eff 4 Feb (12-2)

DENVER, COLO
RNAV (GPS) Y Rwy 8

D-ATIS Arrival 125.6	DENVER Approach (R) North 119.3 South 120.35		DENVER Tower 132.35	Ground 121.85
WAAS Ch 82228 W-08A	Final Apch Crs 082°	Minimum Alt OWNER 7000' (1646')	LPV DA(H) 5554' (200')	Apt Elev 5434' TDZE 5354'
MISSED APCH: Climb to 10000' direct KVERN and on track 041° to WITNE and hold.				 MSA RW08 9700'
Alt Set: INCHES Trans level: FL 180 Trans alt: 18000' 1. Simultaneous approach authorized with Rwy 7. 2. Use of Flight Director or Autopilot providing RNAV track guidance required during simultaneous operations. 3. LNAV procedure not authorized during simultaneous operations. 4. For uncompensated Baro-VNAV systems, LNAV/VNAV not authorized below -25°C (-13°F) or above 47°C (117°F). 5. DME/DME RNP-0.30 not authorized. 6. VGSI and RNAV glidepath not coincident (VGSI angle 3.00°/TCH 70').				



Gnd speed-Kts	70	90	100	120	140	160	MALSRS	10000'	D → KVERN
Glide Path Angle	3.00°	372	478	531	637	743	PAPIS	↑	
LPV, LNAV/VNAV: MAP at DA									
LNAV: MAP at RW08									

TERPS STRAIGHT-IN LANDING RWY 8							
A	LPV DA(H) 5554' (200')		LNAV/VNAV DA(H) 5833' (479')		LNAV MDA(H) 5720' (366')		ALS out
	RAIL out	ALS out	RAIL out	ALS out	RAIL out	ALS out	
B	RVR 24 or 1/2	RVR 40 or 3/4	RVR 60 or 1/8	1 1/2	RVR 24 or 1/2	RVR 40 or 3/4	RVR 55 or 1
C					RVR 35 or 5/8		
D							

LNAV procedure not authorized during simultaneous operations.

CHANGES: Waypoint OLDAE renamed to KVERN, notes.

© JEPPESEN, 2002, 2016. ALL RIGHTS RESERVED.

TERPS AMEND 1B 4 FEB 2016