

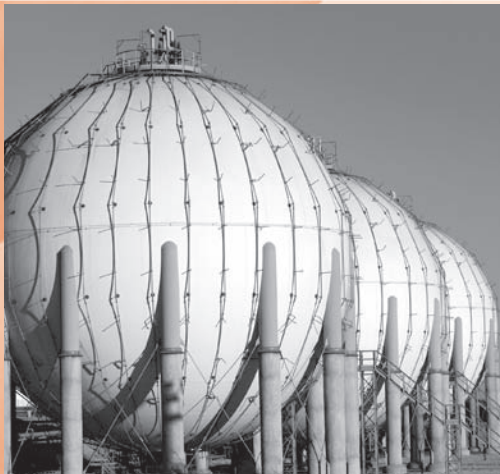
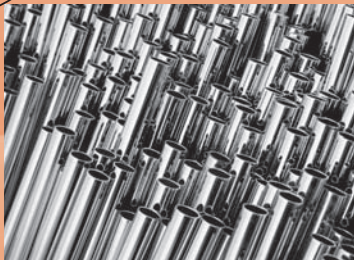
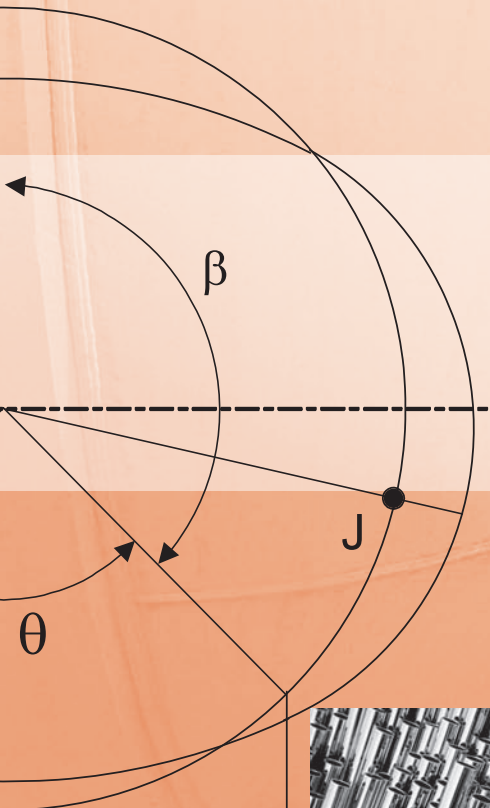
2010 ASME Boiler and Pressure Vessel Code

AN INTERNATIONAL CODE

II

Part A Ferrous Material Specifications (Beginning to SA-450)

Materials



INTENTIONALLY LEFT BLANK

AN INTERNATIONAL CODE

2010 ASME Boiler & Pressure Vessel Code

2010 Edition

July 1, 2010

II

Part A

Ferrous Material Specifications (Beginning to SA-450)

MATERIALS

ASME Boiler and Pressure Vessel Committee on Materials



Three Park Avenue • New York, NY • 10016 USA

Date of Issuance: July 1, 2010
(Includes all Addenda dated July 2009 and earlier)

This international code or standard was developed under procedures accredited as meeting the criteria for American National Standards and it is an American National Standard. The Standards Committee that approved the code or standard was balanced to assure that individuals from competent and concerned interests have had an opportunity to participate. The proposed code or standard was made available for public review and comment that provides an opportunity for additional public input from industry, academia, regulatory agencies, and the public-at-large.

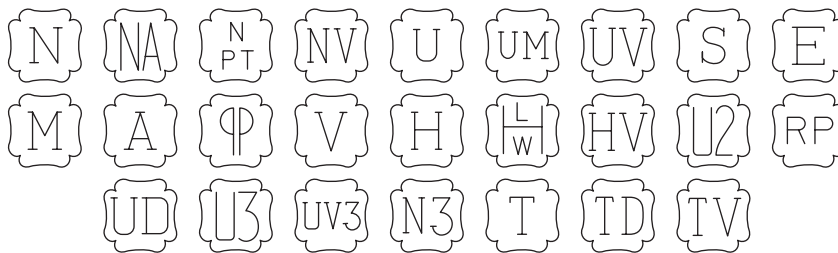
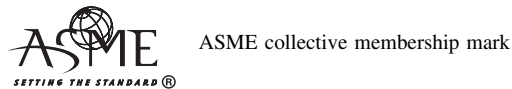
ASME does not “approve,” “rate,” or “endorse” any item, construction, proprietary device, or activity.

ASME does not take any position with respect to the validity of any patent rights asserted in connection with any items mentioned in this document, and does not undertake to insure anyone utilizing a standard against liability for infringement of any applicable letters patent, nor assume any such liability. Users of a code or standard are expressly advised that determination of the validity of any such patent rights, and the risk of infringement of such rights, is entirely their own responsibility.

Participation by federal agency representative(s) or person(s) affiliated with industry is not to be interpreted as government or industry endorsement of this code or standard.

ASME accepts responsibility for only those interpretations of this document issued in accordance with the established ASME procedures and policies, which precludes the issuance of interpretations by individuals.

The footnotes in this document are part of this American National Standard.



The above ASME symbols are registered in the U.S. Patent Office.

“ASME” is the trademark of the American Society of Mechanical Engineers.

The Specifications published and copyrighted by the American Society for Testing and Materials are reproduced with the Society’s permission.

No part of this document may be reproduced in any form, in an electronic retrieval system or otherwise, without the prior written permission of the publisher.

Library of Congress Catalog Card Number: 56-3934
Printed in the United States of America

Adopted by the Council of the American Society of Mechanical Engineers, 1914.
Revised 1940, 1941, 1943, 1946, 1949, 1952, 1953, 1956, 1959, 1962, 1965, 1968, 1971, 1974, 1977, 1980, 1983, 1986, 1989, 1992, 1995, 1998, 2001, 2004, 2007, 2010

The American Society of Mechanical Engineers
Three Park Avenue, New York, NY 10016-5990

Copyright © 2010 by
THE AMERICAN SOCIETY OF MECHANICAL ENGINEERS
All Rights Reserved

CONTENTS

List of Sections	ix
Foreword	xi
Statements of Policy	xiii
Personnel	xiv
ASTM Personnel	xxvi
Preface	xxvii
Specifications Listed by Materials	xxviii
Specification Removal	xxxvi
Guidelines on Submittal of Technical Inquiries to the Boiler and Pressure Vessel Committee	xxxvii
Guideline on the Approval of New Materials Under the ASME Boiler and Pressure Vessel Code	xxxix
Guideline on Acceptable ASTM Editions	xliii
Guideline on Acceptable Non-ASTM Editions	liii
Guidelines on Multiple Marking of Materials	liv
Summary of Changes	lvi
List of Changes in Record Number Order	lviii

Specifications

SA-6/SA-6M	General Requirements for Rolled Structural Steel Bars, Plates, Shapes, and Sheet Piling	1
SA-20/SA-20M	General Requirements for Steel Plates for Pressure Vessels	83
SA-29/SA-29M	Steel Bars, Carbon and Alloy, Hot-Wrought, General Requirements for ...	125
SA-31	Steel Rivets and Bars for Rivets, Pressure Vessels	143
SA-36/SA-36M	Carbon Structural Steel	147
SA-47/SA-47M	Ferritic Malleable Iron Castings	153
SA-53/SA-53M	Pipe, Steel, Black and Hot-Dipped, Zinc-Coated, Welded and Seamless ...	161
SA-105/SA-105M	Carbon Steel Forgings for Piping Applications	189
SA-106/SA-106M	Seamless Carbon Steel Pipe for High-Temperature Service	195
SA-134	Pipe, Steel, Electric-Fusion (Arc)-Welded (Sizes NPS 16 and Over)	207
SA-135	Electric-Resistance-Welded Steel Pipe	213
SA-178/SA-178M	Electric-Resistance-Welded Carbon Steel and Carbon-Manganese Steel Boiler and Superheater Tubes	223
SA-179/SA-179M	Seamless Cold-Drawn Low-Carbon Steel Heat-Exchanger and Condenser Tubes	229
SA-181/SA-181M	Carbon Steel Forgings, for General-Purpose Piping	233
SA-182/SA-182M	Forged or Rolled Alloy and Stainless Steel Pipe Flanges, Forged Fittings, and Valves and Parts for High-Temperature Service	237
SA-192/SA-192M	Seamless Carbon Steel Boiler Tubes for High-Pressure Service	257
SA-193/SA-193M	Alloy-Steel and Stainless Steel Bolting Materials for High-Temperature or High Pressure Service and Other Special Purpose Applications	261
SA-194/SA-194M	Carbon and Alloy Steel Nuts for Bolts for High Pressure or High Temperature Service, or Both	277
SA-202/SA-202M	Pressure Vessel Plates, Alloy Steel, Chromium-Manganese-Silicon	293
SA-203/SA-203M	Pressure Vessel Plates, Alloy Steel, Nickel	297
SA-204/SA-204M	Pressure Vessel Plates, Alloy Steel, Molybdenum	301

SA-209/SA-209M	Seamless Carbon-Molybdenum Alloy-Steel Boiler and Superheater Tubes	305
SA-210/SA-210M	Seamless Medium-Carbon Steel Boiler and Superheater Tubes	311
SA-213/SA-213M	Seamless Ferritic and Austenitic Alloy-Steel Boiler, Superheater, and Heat-Exchanger Tubes	315
SA-214/SA-214M	Electric-Resistance-Welded Carbon Steel Heat-Exchanger and Condenser Tubes	329
SA-216/SA-216M	Steel Castings, Carbon, Suitable for Fusion Welding for High-Temperature Service	331
SA-217/SA-217M	Steel Castings, Martensitic Stainless and Alloy, for Pressure-Containing Parts, Suitable for High-Temperature Service	335
SA-225/SA-225M	Pressure Vessel Plates, Alloy Steel, Manganese-Vanadium-Nickel	341
SA-231/SA-231M	Chromium-Vanadium Alloy Steel Spring Wire	345
SA-232/SA-232M	Chromium-Vanadium Alloy Steel Valve Spring Quality Wire	351
SA-234/SA-234M	Piping Fittings of Wrought Carbon Steel and Alloy Steel for Moderate and High-Temperature Service	355
SA-240/SA-240M	Chromium and Chromium-Nickel Stainless Steel Plate, Sheet, and Strip for Pressure Vessels and for General Applications	365
SA-249/SA-249M	Welded Austenitic Steel Boiler, Superheater, Heat-Exchanger, and Condenser Tubes	377
SA-250/SA-250M	Electric-Resistance-Welded Ferritic Alloy-Steel Boiler and Superheater Tubes	387
SA-263	Stainless Chromium Steel-Clad Plate	393
SA-264	Stainless Chromium-Nickel Steel-Clad Plate	401
SA-265	Nickel and Nickel-Base Alloy-Clad Steel Plate	409
SA-266/SA-266M	Carbon Steel Forgings for Pressure Vessel Components	417
SA-268/SA-268M	Seamless and Welded Ferritic and Martensitic Stainless Steel Tubing for General Service	423
SA-275/SA-275M	Magnetic Particle Examination of Steel Forgings	433
SA-276	Stainless Steel Bars and Shapes	441
SA-278/SA-278M	Gray Iron Castings for Pressure-Containing Parts for Temperatures Up to 650°F (350°C)	451
SA-283/SA-283M	Low and Intermediate Tensile Strength Carbon Steel Plates	457
SA-285/SA-285M	Pressure Vessel Plates, Carbon Steel, Low- and Intermediate-Tensile Strength	461
SA-299/SA-299M	Pressure Vessel Plates, Carbon Steel, Manganese-Silicon	465
SA-302/SA-302M	Pressure Vessel Plates, Alloy Steel, Manganese-Molybdenum and Manganese-Molybdenum-Nickel	469
SA-307	Carbon Steel Bolts and Studs, 60 000 psi Tensile Strength	473
SA-311/SA-311M	Cold-Drawn, Stress-Relieved Carbon Steel Bars Subject to Mechanical Property Requirements	481
SA-312/SA-312M	Seamless and Welded Austenitic Stainless Steel Pipes	487
SA-320/SA-320M	Alloy Steel and Stainless Steel Bolting Materials for Low-Temperature Service	499
SA-325	Structural Bolts, Steel, Heat Treated, 120/105 ksi Minimum Tensile Strength	509
SA-333/SA-333M	Seamless and Welded Steel Pipe for Low-Temperature Service	519
SA-334/SA-334M	Seamless and Welded Carbon and Alloy-Steel Tubes for Low-Temperature Service	531
SA-335/SA-335M	Seamless Ferritic Alloy-Steel Pipe for High-Temperature Service	541
SA-336/SA-336M	Alloy Steel Forgings for Pressure and High-Temperature Parts	555
SA-350/SA-350M	Carbon and Low-Alloy Steel Forgings, Requiring Notch Toughness Testing for Piping Components	563

SA-351/SA-351M	Castings, Austenitic, Austenitic-Ferritic (Duplex), for Pressure-Containing Parts	575
SA-352/SA-352M	Steel Castings, Ferritic and Martensitic, for Pressure Containing Parts, Suitable for Low-Temperature Service	583
SA-353/SA-353M	Pressure Vessel Plates, Alloy Steel, 9 Percent Nickel, Double-Normalized and Tempered	591
SA-354	Quenched and Tempered Alloy Steel Bolts, Studs, and Other Externally Threaded Fasteners	597
SA-358/SA-358M	Electric-Fusion-Welded Austenitic Chromium-Nickel Alloy Steel Pipe for High-Temperature Service	605
SA-369/SA-369M	Carbon and Ferritic Alloy Steel Forged and Bored Pipe for High-Temperature Service	615
SA-370	Test Methods and Definitions for Mechanical Testing of Steel Products	621
SA-372/SA-372M	Carbon and Alloy Steel Forgings for Thin-Walled Pressure Vessels	679
SA-376/SA-376M	Seamless Austenitic Steel Pipe for High-Temperature Central-Station Service	685
SA-387/SA-387M	Pressure Vessel Plates, Alloy Steel, Chromium-Molybdenum	695
SA-388/SA-388M	Ultrasonic Examination of Heavy Steel Forgings	703
SA-395/SA-395M	Ferritic Ductile Iron Pressure-Retaining Castings for Use at Elevated Temperatures	713
SA-403/SA-403M	Wrought Austenitic Stainless Steel Piping Fittings	725
SA-409/SA-409M	Welded Large Diameter Austenitic Steel Pipe for Corrosive or High-Temperature Service	735
SA-414/SA-414M	Steel, Sheet, Carbon, for Pressure Vessels	745
SA-420/SA-420M	Piping Fittings of Wrought Carbon Steel and Alloy Steel for Low-Temperature Service	749
SA-423/SA-423M	Seamless and Electric-Welded Low-Alloy Steel Tubes	759
SA-426/SA-426M	Centrifugally Cast Ferritic Alloy Steel Pipe for High-Temperature Service	765
SA-435/SA-435M	Straight-Beam Ultrasonic Examination of Steel Plates	771
SA-437/SA-437M	Alloy Steel Turbine-Type Bolting Material Specially Heat Treated for High-Temperature Service	775
SA-449	Hex Cap Screws, Bolts and Studs, Steel, Heat Treated, 120/105/90 ksi Minimum Tensile Strength, General Use	781
SA-450/SA-450M	General Requirements for Carbon, Ferritic Alloy, and Austenitic Alloy Steel Tubes	793
SA-451/SA-451M	Centrifugally Cast Austenitic Steel Pipe for High-Temperature Service	805
SA-453/SA-453M	High-Temperature Bolting Materials With Expansion Coefficients Comparable to Austenitic Steels	811
SA-455/SA-455M	Pressure Vessel Plates, Carbon Steel, High-Strength Manganese	821
SA-476/SA-476M	Ductile Iron Castings for Paper Mill Dryer Rolls	825
SA-479/SA-479M	Stainless Steel Bars and Shapes for Use in Boilers and Other Pressure Vessels	831
SA-480/SA-480M	General Requirements for Flat-Rolled Stainless and Heat-Resisting Steel Plate, Sheet, and Strip	843
SA-484/SA-484M	General Requirements for Stainless Steel Bars, Billets, and Forgings	871
SA-487/SA-487M	Steel Castings Suitable for Pressure Service	887
SA-494/SA-494M	Castings, Nickel and Nickel Alloy	895
SA-508/SA-508M	Quenched and Tempered Vacuum-Treated Carbon and Alloy Steel Forgings for Pressure Vessels	897
SA-513	Electric-Resistance-Welded Carbon and Alloy Steel Mechanical Tubing	907
SA-515/SA-515M	Pressure Vessel Plates, Carbon Steel, for Intermediate- and Higher-Temperature Service	933

SA-516/SA-516M	Pressure Vessel Plates, Carbon Steel, for Moderate- and Lower-Temperature Service.....	937
SA-517/SA-517M	Pressure Vessel Plates, Alloy Steel, High Strength, Quenched and Tempered.....	943
SA-522/SA-522M	Forged or Rolled 8 and 9% Nickel Alloy Steel Flanges, Fittings, Valves, and Parts for Low-Temperature Service	947
SA-524	Seamless Carbon Steel Pipe for Atmospheric and Lower Temperatures	953
SA-530/SA-530M	General Requirements for Specialized Carbon and Alloy Steel Pipe.....	963
SA-533/SA-533M	Pressure Vessel Plates, Alloy Steel, Quenched and Tempered, Manganese-Molybdenum and Manganese-Molybdenum-Nickel.....	973
SA-537/SA-537M	Pressure Vessel Plates, Heat-Treated, Carbon-Manganese-Silicon Steel.....	979
SA-540/SA-540M	Alloy Steel Bolting Materials for Special Applications	985
SA-541/SA-541M	Quenched and Tempered Carbon and Alloy Steel Forgings for Pressure Vessel Components.....	995
SA-542/SA-542M	Pressure Vessel Plates, Alloy Steel, Quenched-and-Tempered, Chromium-Molybdenum and Chromium-Molybdenum-Vanadium	1003
SA-543/SA-543M	Pressure Vessel Plates, Alloy Steel, Quenched and Tempered, Nickel-Chromium-Molybdenum	1009
SA-553/SA-553M	Pressure Vessel Plates, Alloy Steel, Quenched and Tempered 8 and 9% Nickel.....	1013
SA-556/SA-556M	Seamless Cold-Drawn Carbon Steel Feedwater Heater Tubes	1019
SA-557/SA-557M	Electric-Resistance-Welded Carbon Steel Feedwater Heater Tubes.....	1025
SA-562/SA-562M	Pressure Vessel Plates, Carbon Steel, Manganese-Titanium for Glass or Diffused Metallic Coatings	1031
SA-563	Carbon and Alloy Steel Nuts	1035
SA-564/SA-564M	Hot-Rolled and Cold-Finished Age-Hardening Stainless Steel Bars and Shapes	1047
SA-568/SA-568M	Steel, Sheet, Carbon Structural, and High-Strength, Low-Alloy, Hot-Rolled and Cold-Rolled, General Requirements for	1057
SA-572/SA-572M	High-Strength Low-Alloy Columbium-Vanadium Structural Steel.....	1091
SA-574	Alloy Steel Socket-Head Cap Screws	1097
SA-577/SA-577M	Ultrasonic Angle-Beam Examination of Steel Plates.....	1105
SA-578/SA-578M	Straight-Beam Ultrasonic Examination of Rolled Steel Plates for Special Applications	1109
SA-587	Electric-Resistance-Welded Low-Carbon Steel Pipe for the Chemical Industry	1115
SA-592/SA-592M	High-Strength Quenched and Tempered Low-Alloy Steel Forged Fittings and Parts for Pressure Vessels.....	1123
SA-609/SA-609M	Castings, Carbon, Low-Alloy, and Martensitic Stainless Steel, Ultrasonic Examination Thereof.....	1127
SA-612/SA-612M	Pressure Vessel Plates, Carbon Steel, High Strength, for Moderate and Lower Temperature Service	1139
SA-638/SA-638M	Precipitation Hardening Iron Base Superalloy Bars, Forgings, and Forging Stock for High-Temperature Service.....	1143
SA-645/SA-645M	Pressure Vessel Plates, 5% and 5½% Nickel Alloy Steels, Specially Heat Treated.....	1147
SA-649/SA-649M	Forged Steel Rolls Used for Corrugating Paper Machinery.....	1153
SA-656/SA-656M	Hot-Rolled Structural Steel, High-Strength Low-Alloy Plate With Improved Formability	1159
SA-660	Centrifugally Cast Carbon Steel Pipe for High-Temperature Service	1161
SA-662/SA-662M	Pressure Vessel Plates, Carbon-Manganese-Silicon Steel, for Moderate and Lower Temperature Service	1167

SA-666	Annealed or Cold-Worked Austenitic Stainless Steel, Sheet, Strip, Plate, and Flat Bar.....	1173
SA-667/SA-667M	Centrifugally Cast Dual Metal (Gray and White Cast Iron) Cylinders	1183
SA-671	Electric-Fusion-Welded Steel Pipe for Atmospheric and Lower Temperatures	1185
SA-672	Electric-Fusion-Welded Steel Pipe for High-Pressure Service at Moderate Temperatures	1195
SA-675/SA-675M	Steel Bars, Carbon, Hot-Wrought, Special Quality, Mechanical Properties.....	1203
SA-688/SA-688M	Welded Austenitic Stainless Steel Feedwater Heater Tubes	1209
SA-691	Carbon and Alloy Steel Pipe, Electric-Fusion-Welded for High- Pressure Service at High Temperatures	1219
SA-693	Precipitation-Hardening Stainless and Heat-Resisting Steel Plate, Sheet, and Strip	1227
SA-695	Steel Bars, Carbon, Hot-Wrought, Special Quality, for Fluid Power Applications	1235
SA-696	Steel Bars, Carbon, Hot-Wrought or Cold-Finished, Special Quality, for Pressure Piping Components	1239
SA-703/SA-703M	Steel Castings, General Requirements, for Pressure-Containing Parts	1243
SA-705/SA-705M	Age-Hardening Stainless Steel Forgings.....	1263
SA-723/SA-723M	Alloy Steel Forgings for High-Strength Pressure Component Application	1271
SA-724/SA-724M	Pressure Vessel Plates, Carbon-Manganese-Silicon Steel, Quenched and Tempered, for Welded Layered Pressure Vessels	1277
SA-727/SA-727M	Carbon Steel Forgings for Piping Components With Inherent Notch Toughness	1281
SA-731/SA-731M	Seamless, Welded Ferritic, and Martensitic Stainless Steel Pipe	1287
SA-736/SA-736M	Pressure Vessel Plates, Low-Carbon Age-Hardening Nickel-Copper- Chromium-Molybdenum-Columbium and Nickel-Copper- Manganese-Molybdenum-Columbium Alloy Steel	1293
SA-737/SA-737M	Pressure Vessel Plates, High-Strength, Low-Alloy Steel	1299
SA-738/SA-738M	Pressure Vessel Plates, Heat-Treated, Carbon-Manganese-Silicon Steel, for Moderate and Lower Temperature Service.....	1303
SA-739	Steel Bars, Alloy, Hot-Wrought, for Elevated Temperature or Pressure- Containing Parts, or Both	1309
SA-745/SA-745M	Ultrasonic Examination of Austenitic Steel Forgings	1313
SA-747/SA-747M	Steel Castings, Stainless, Precipitation Hardening	1319
SA-748/SA-748M	Statically Cast Chilled White Iron-Gray Iron Dual Metal Rolls for Pressure Vessel Use.....	1325
SA-749/SA-749M	Steel, Strip, Carbon and High-Strength, Low-Alloy, Hot-Rolled, General Requirements for	1327
SA-751	Test Methods, Practices, and Terminology for Chemical Analysis of Steel Products	1337
SA-765/SA-765M	Carbon Steel and Low-Alloy Steel Pressure-Vessel-Component Forgings With Mandatory Toughness Requirements.....	1345
SA-770/SA-770M	Through-Thickness Tension Testing of Steel Plates for Special Applications	1353
SA-781/SA-781M	Castings, Steel and Alloy, Common Requirements, for General Industrial Use	1361
SA-788/SA-788M	Steel Forgings, General Requirements	1379
SA-789/SA-789M	Seamless and Welded Ferritic/Austenitic Stainless Steel Tubing for General Service	1395
SA-790/SA-790M	Seamless and Welded Ferritic/Austenitic Stainless Steel Pipe	1403
SA-803/SA-803M	Welded Ferritic Stainless Steel Feedwater Heater Tubes	1415

SA-813/SA-813M	Single- or Double-Welded Austenitic Stainless Steel Pipe.....	1427
SA-814/SA-814M	Cold-Worked Welded Austenitic Stainless Steel Pipe.....	1437
SA-815/SA-815M	Wrought Ferritic, Ferritic/Austenitic, and Martensitic Stainless Steel Piping Fittings.....	1445
SA-832/SA-832M	Pressure Vessel Plates, Alloy Steel, Chromium-Molybdenum- Vanadium.....	1455
SA-834	Common Requirements for Iron Castings for General Industrial Use.....	1461
SA-836/SA-836M	Titanium-Stabilized Carbon Steel Forgings for Glass-Lined Piping and Pressure Vessel Service.....	1465
SA-841/SA-841M	Steel Plates for Pressure Vessels, Produced by Thermo-Mechanical Control Process (TMCP).....	1469
SA-905	Steel Wire, Pressure Vessel Winding.....	1479
SA-941	Terminology Relating to Steel, Stainless Steel, Related Alloys, and Ferroalloys.....	1485
SA-960/SA-960M	Common Requirements for Wrought Steel Piping Fittings.....	1493
SA-961/SA-961M	Common Requirements for Steel Flanges, Forged Fittings, Valves and Parts for Piping Applications.....	1505
SA-962/SA-962M	Common Requirements for Steel Fasteners or Fastener Materials, or Both, Intended for Use at Any Temperature From Cryogenic to the Creep Range.....	1517
SA-965/SA-965M	Steel Forgings, Austenitic, for Pressure and High Temperature Parts.....	1531
SA-985/SA-985M	Steel Investment Castings General Requirements, for Pressure-Containing Parts.....	1539
SA-995	Castings, Austenitic-Ferritic (Duplex) Stainless Steel, for Pressure- Containing Parts.....	1559
SA-999/SA-999M	General Requirements for Alloy and Stainless Steel Pipe.....	1563
SA-1008/SA-1008M	Steel, Sheet, Cold-Rolled, Carbon, Structural, High-Strength Low-Alloy and High-Strength Low-Alloy With Improved Formability.....	1577
SA-1010/SA-1010M	Higher-Strength Martensitic Stainless Steel Plate, Sheet, and Strip.....	1587
SA-1011/SA-1011M	Steel, Sheet and Strip, Hot-Rolled, Carbon, Structural, High-Strength Low-Alloy, High-Strength Low-Alloy With Improved Formability, and Ultra-High Strength.....	1591
SA-1016/SA-1016M	General Requirements for Ferritic Alloy Steel, Austenitic Alloy Steel, and Stainless Steel Tubes.....	1601
SA-1017/SA-1017M	Pressure Vessel Plates, Alloy Steel, Chromium-Molybdenum-Tungsten....	1617
SF-568M	Carbon and Alloy Steel Externally Threaded Metric Fasteners.....	1623
SA/AS 1548	Steel Plates for Pressure Equipment.....	1635
SA/CSA-G40.21	Structural Quality Steels.....	1637
SA/EN 10028-2	Flat Products Made of Steels for Pressure Purposes Part 2: Non-Alloy and Alloy Steels With Specified Elevated Temperature Properties.....	1639
SA/EN 10028-3	Flat Products Made of Steels for Pressure Purposes Part 3: Weldable Fine Grain Steels, Normalized.....	1641
SA/EN 10028-7	Flat Products Made of Steels for Pressure Purposes Part 7: Stainless Steels.....	1643
SA/GB 6654	Steel Plates for Pressure Vessels.....	1645
SA/JIS G3118	Carbon Steel Plates for Pressure Vessels for Intermediate and Moderate Temperature Service.....	1647
SA/JIS G4303	Stainless Steel Bars.....	1649

MANDATORY APPENDIX

I	Standard Units for Use in Equations.....	1651
---	--	------

NONMANDATORY APPENDIX

A	Sources of Standards.....	1653
---	---------------------------	------

2010 ASME

(10)

BOILER AND PRESSURE VESSEL CODE

SECTIONS

- I Rules for Construction of Power Boilers
- II Materials
 - Part A — Ferrous Material Specifications
 - Part B — Nonferrous Material Specifications
 - Part C — Specifications for Welding Rods, Electrodes, and Filler Metals
 - Part D — Properties (Customary)
 - Part D — Properties (Metric)
- III Rules for Construction of Nuclear Facility Components
 - Subsection NCA — General Requirements for Division 1 and Division 2
 - Division 1
 - Subsection NB — Class 1 Components
 - Subsection NC — Class 2 Components
 - Subsection ND — Class 3 Components
 - Subsection NE — Class MC Components
 - Subsection NF — Supports
 - Subsection NG — Core Support Structures
 - Subsection NH — Class 1 Components in Elevated Temperature Service
 - Appendices
 - Division 2 — Code for Concrete Containments
 - Division 3 — Containments for Transportation and Storage of Spent Nuclear Fuel and High Level Radioactive Material and Waste
- IV Rules for Construction of Heating Boilers
- V Nondestructive Examination
- VI Recommended Rules for the Care and Operation of Heating Boilers
- VII Recommended Guidelines for the Care of Power Boilers
- VIII Rules for Construction of Pressure Vessels
 - Division 1
 - Division 2 — Alternative Rules
 - Division 3 — Alternative Rules for Construction of High Pressure Vessels
- IX Welding and Brazing Qualifications
- X Fiber-Reinforced Plastic Pressure Vessels
- XI Rules for Inservice Inspection of Nuclear Power Plant Components
- XII Rules for Construction and Continued Service of Transport Tanks

ADDENDA

Addenda, which include additions and revisions to individual Sections of the Code, will be sent automatically to purchasers of the applicable Sections up to the publication of the 2013 Code. The 2010 Code is available only in the loose-leaf format; accordingly, the Addenda will be issued in the loose-leaf, replacement-page format.

INTERPRETATIONS

ASME issues written replies to inquiries concerning interpretation of technical aspects of the Code. The Interpretations for each individual Section will be published separately and will be included as part of the update service to that Section. Interpretations of Section III, Divisions 1

and 2, will be included with the update service to Subsection NCA.

Interpretations of the Code are posted in January and July at www.cstools.asme.org/interpretations.

CODE CASES

The Boiler and Pressure Vessel Committee meets regularly to consider proposed additions and revisions to the Code and to formulate Cases to clarify the intent of existing requirements or provide, when the need is urgent, rules for materials or constructions not covered by existing Code rules. Those Cases that have been adopted will appear in the appropriate 2010 Code Cases book: “Boilers and Pressure Vessels” and “Nuclear Components.” Supplements will be sent automatically to the purchasers of the Code Cases books up to the publication of the 2013 Code.